

Ford Focus Installation Demo

Original Looking



Insert the key to remove the original CD player.



Take out the original CD player



Use a soft cloth to pack the LCD Screen to avoid scratch.

Start to install the Bluetooth Microphone



Remove the Reading Light



Fix the Bluetooth Mic.



Make sure it is inside the correct position. Ford Focus has a special hole space for Microphone.



Fix the Bluetooth microphone cover



Install the Reading Light



After installing the Bluetooth microphone, then fix the cables.



Install Bluetooth microphone cable.



Bluetooth Microphone goes through here



Remove the car door seal, lead the cable to below the steer controller, until the DVD slot, recover the car door seal.

Then install the GPS Antenna.

Stick the sticker to both side of the GPS antenne.



Fix the GPS Antenna



Fix the GPS Antenna on top left corner of the meters. Top right corner is not recommended because if to fix at the top right corner, the cable need to go through the groove cabinet. There is computer circuit under the groove cabinet, not safe.



Let the GPS antenna cable go as per this route.



Reel up the gps antenna cable.

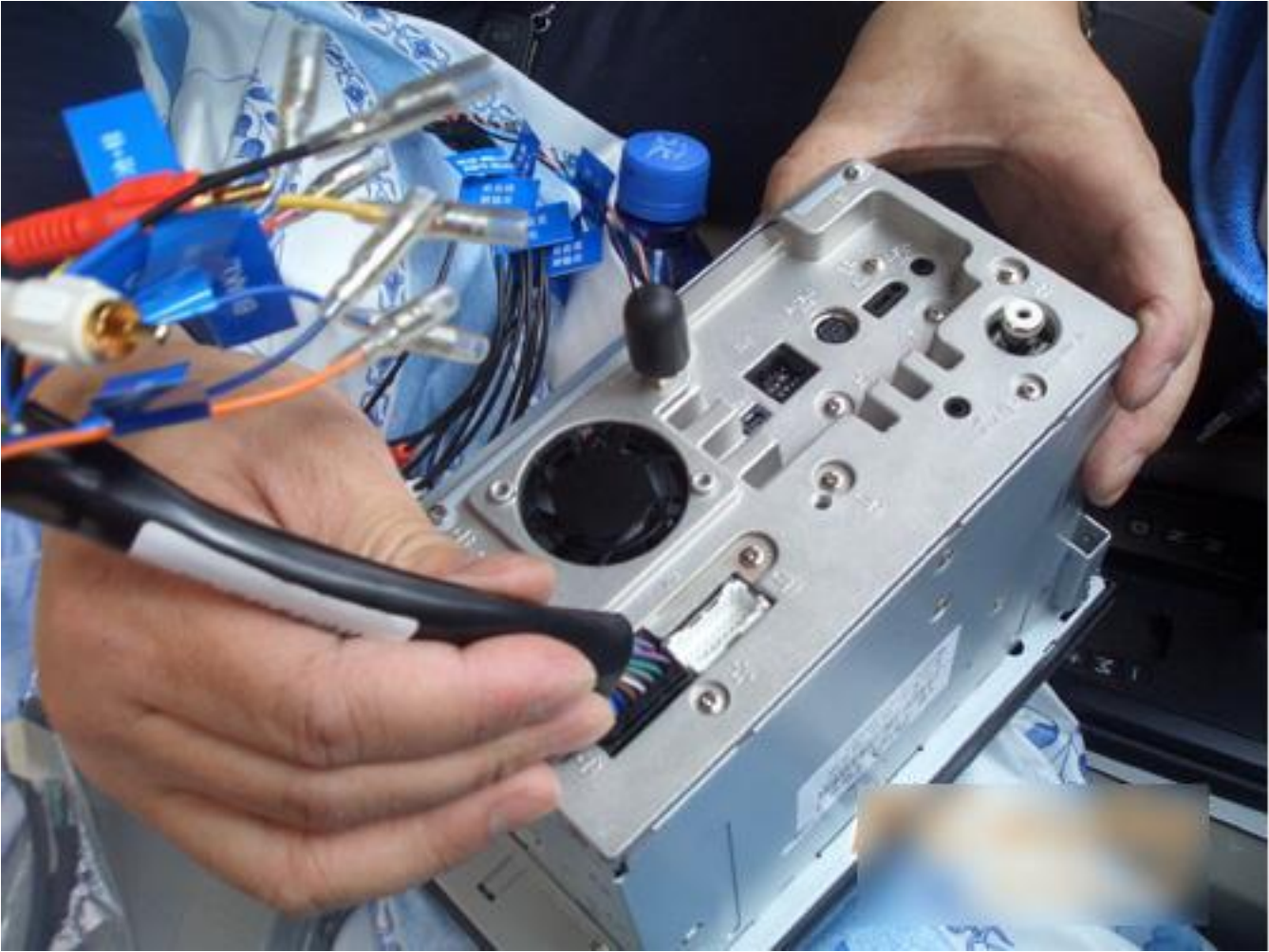


The GPS antenna cable will go the car roof for TX.

It is the GPS Antenna cable and Bluetooth microphone cable inside the red circle.



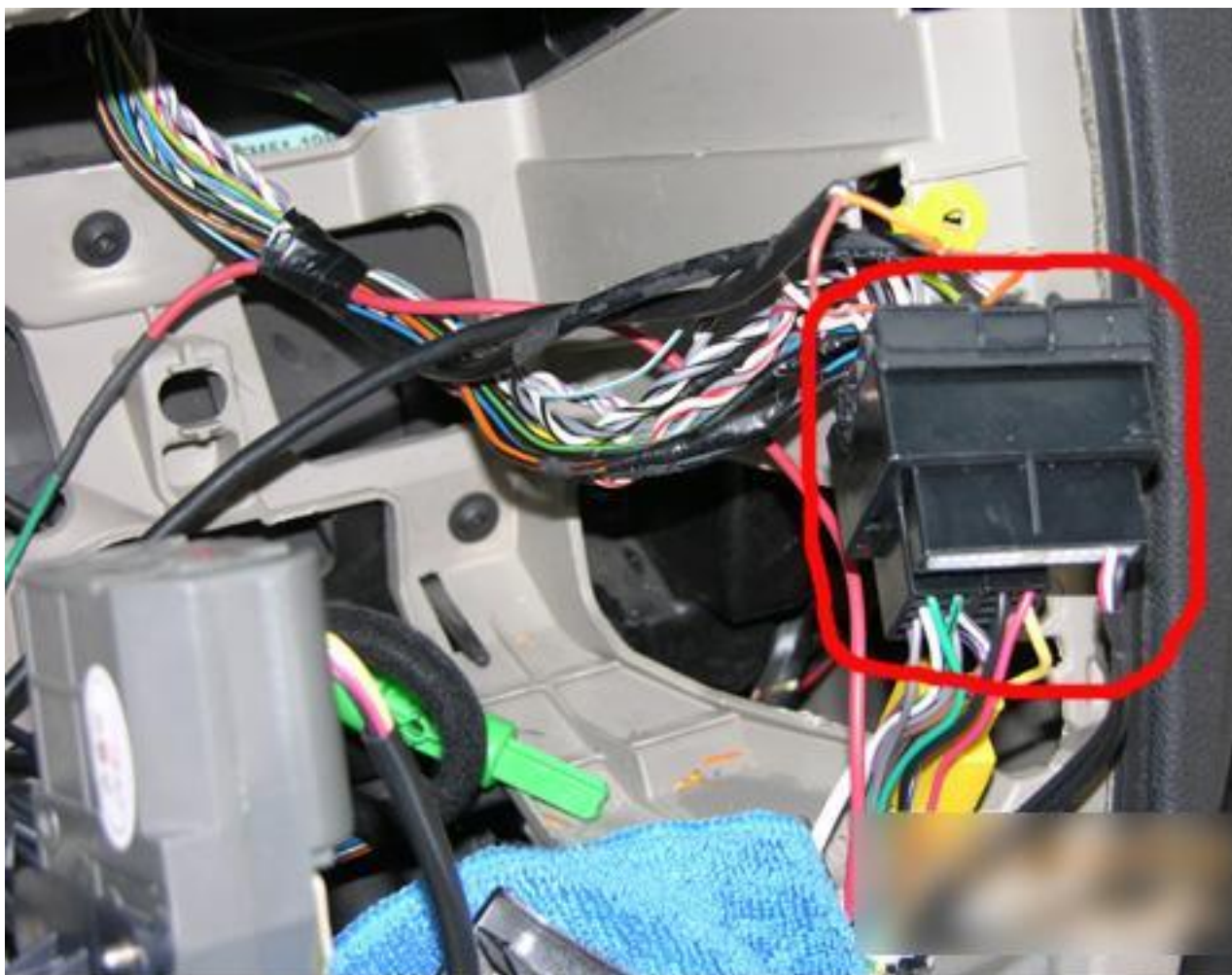
Connect the cable bundle to the device



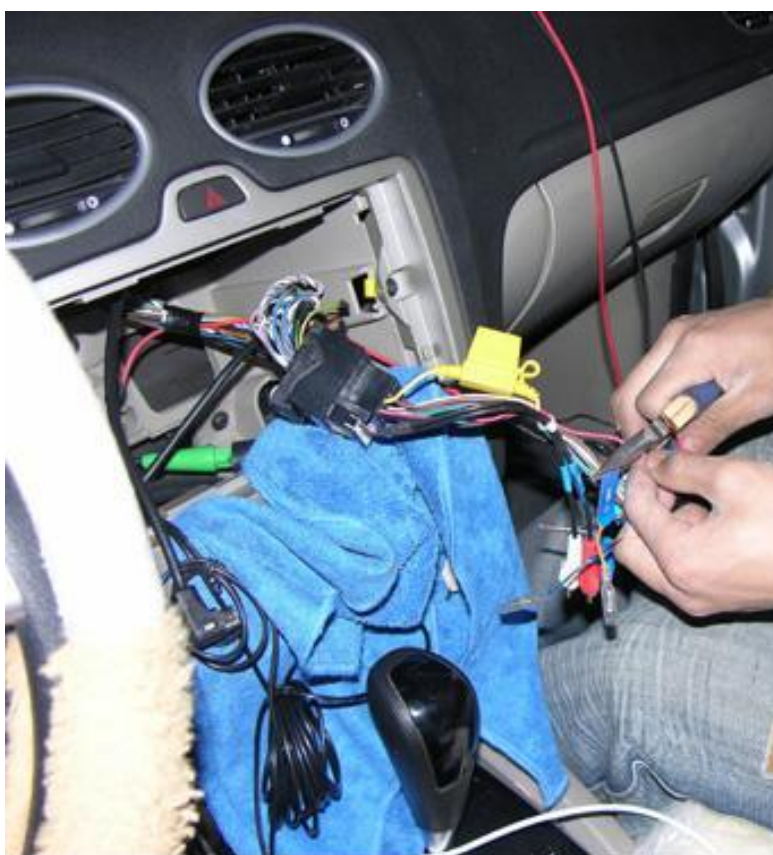
Connect the other end of the cable bundle to the original car cable connector.



Plug into the original cable connector



Connect the ACC cable



Notice the label on each cable. Make sure connection is correct.



Connect the direction controller cables



Then to connect the Back Draft control cables. There is no signal cable of Back Draft control inside the Central controller cabinet. Need to lead one from other places. For simplest connection, the Back Draft indicator light cable can be used. But in case the light is not working, then there will be no Back Draft Monitor Display.

Air filter assembly



Below is what we are looking for now:



Find out the Back Draft cable

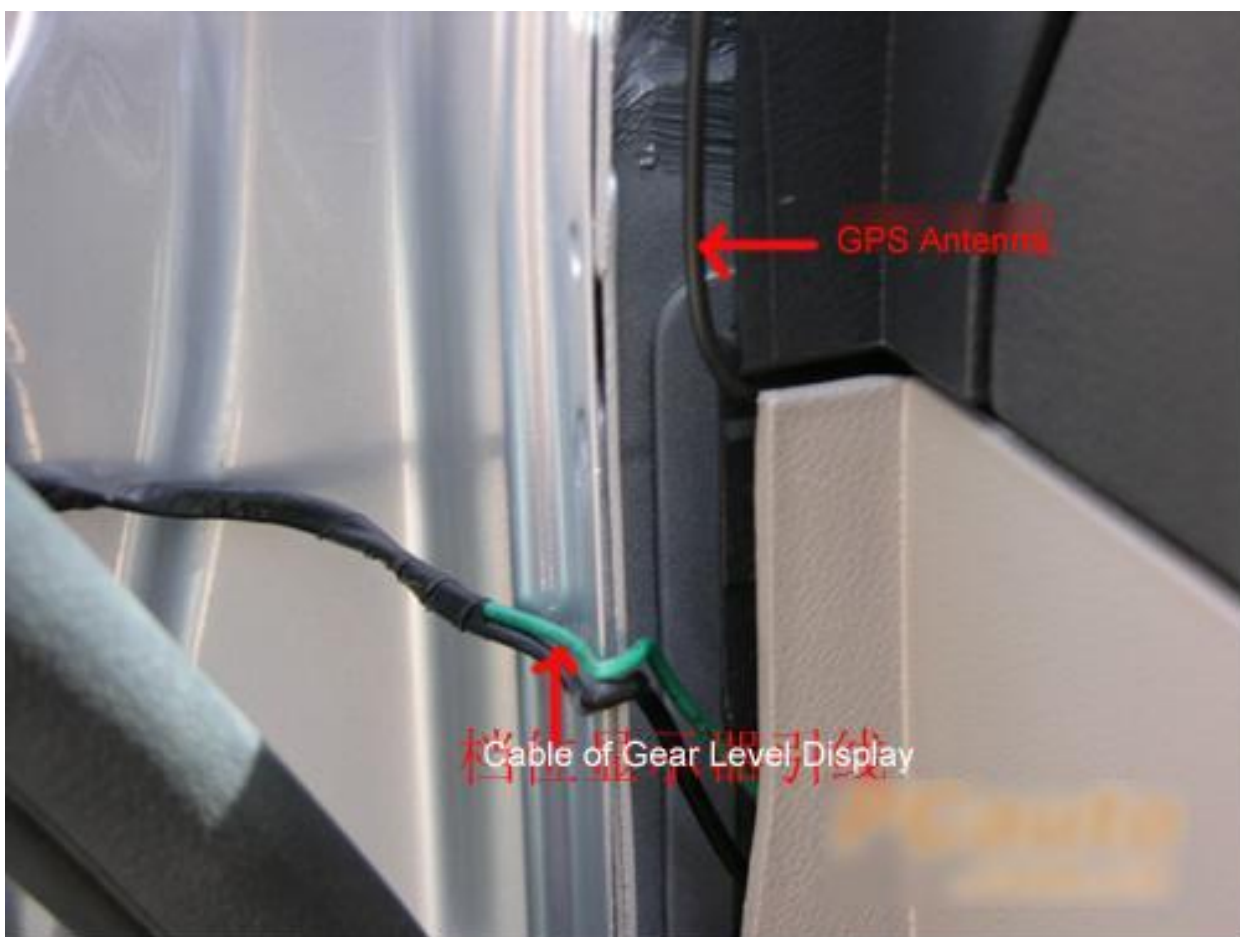


Connect the Back Draft Cable



(The space is a little too small for operation)





If the Bluetooth module is a separate one, then pack the Bluetooth module with sponge to avoid collision and noise inside the cabinet.



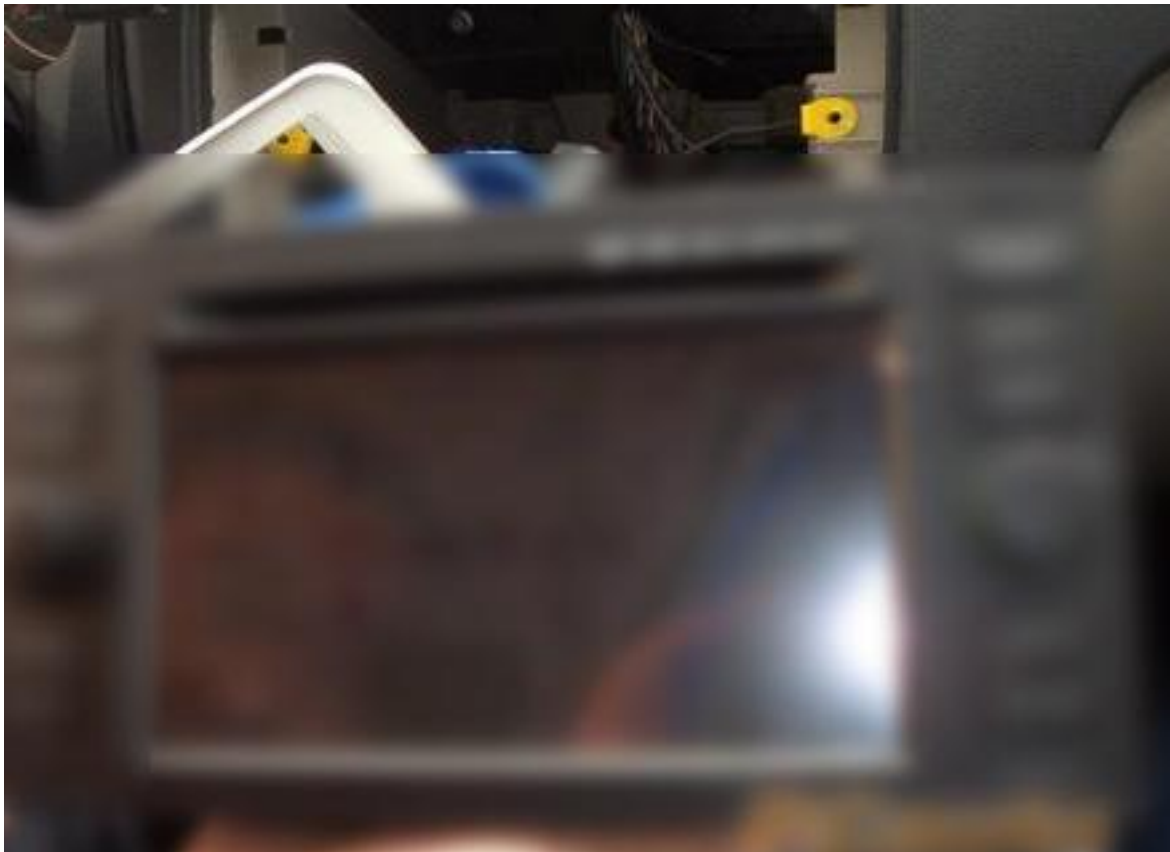
Install the air conditioner panel



Install the clamps provided



Connect the device hardware to have initial test, and Test all functions



Infrared Reversing Camera



Testing:



Completed:

